



2008 ETBF European Women's Championship - Short

Oil Per Board: 30 uL Oil Pattern Distance: 34 Feet Volume Oil Total: 20.04 mL Total Boards Crossed: 668 Boards

Forward Oil Total: 11.01 mL
Forward Boards Crossed: 367 Boards

Reverse Oil Total: 9.03 mL
Reverse Boards Crossed: 301 Boards

	Start	Stop	Loads	Speed	Crossed	Start	End	Feet	T.Oil
1	2L	2R	1	14	37	0.0	0.0	0.0	1,110
2	3L	4R	1	14	34	0.0	1.9	1.9	1020
3	4L	5R	3	18	96	1.9	9.5	7.6	2880
4	5L	6R	3	18	90	9.5	17.1	7.6	2700
5	6L	7R	3	18	84	17.1	24.7	7.6	2520
6	7L	8R	1	18	26	24.7	27.2	2.5	780
7	2L	2R	0	22	0	27.2	30.0	2.8	0
8	2L	2R	0	26	0	30.0	34.0	4.0	0

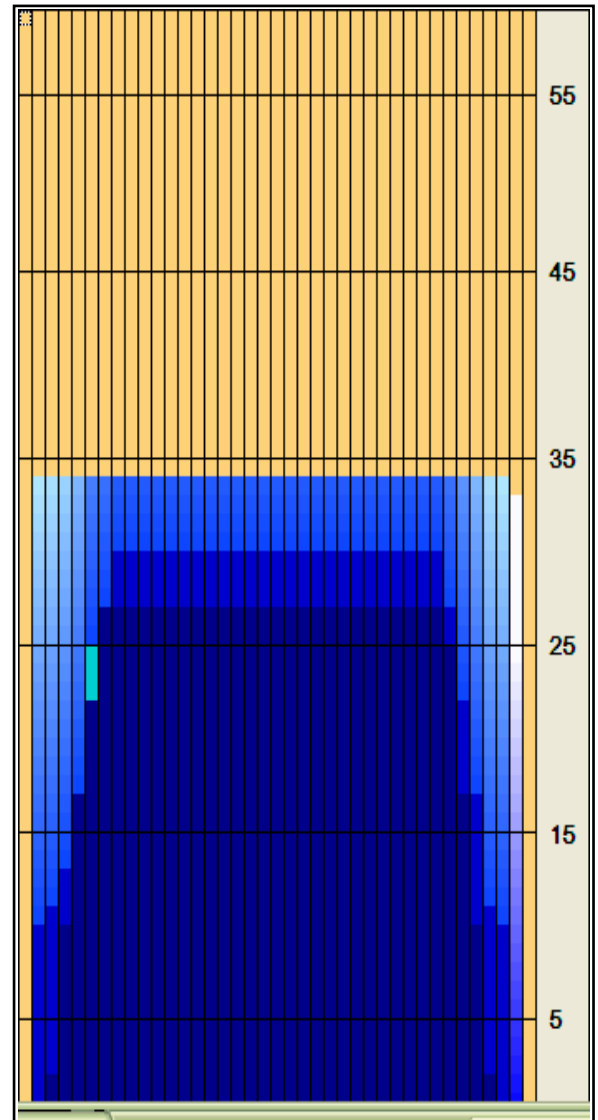
Forward Reverse More Info

Forward Oil

Reverse Oil

Combined Oil

Buff Area



	Start	Stop	Loads	Speed	Crossed	Start	End	Feet	T.Oil
1	2L	2R	0	30	0	34.0	29.0	-5.0	0
2	8L	8R	1	18	25	29.0	26.5	-2.5	750
3	7L	7R	2	18	54	26.5	21.4	-5.1	1620
4	6L	6R	2	18	58	21.4	16.3	-5.1	1740
5	5L	5R	2	14	62	16.3	12.4	-3.9	1860
6	4L	5R	1	14	32	12.4	10.5	-1.9	960
7	3L	4R	1	10	34	10.5	9.1	-1.4	1020
8	2L	3R	1	10	36	9.1	7.7	-1.4	1080
9	2L	2R	0	10	0	7.7	0.0	-7.7	0

Forward Reverse More Info

Arrow Zone Ratios

Item	2-5L:16L-20	6-10L:16-20	11-15L:16L-20	16L-20:20-16R	16L-20:20-16R	20-16R:15-11R	20-16R:10-6R	20-16R:5-2R
ul Arrow	202.5	630	660	660	660	660	606	127.5
Zone Ratio	3.26	1.05	1	1	1	1	1.09	5.18

Track Zone Ratios

Item	3L-7L:18L-18R	8L-12L:18L-18R	13L-17L:18L-18R	18L-18R:17R-13R	18L-18R:12R-8R	18L-18R:7R-3R
Description	Outside Track:Middle	Middle Track:Middle	Inside Track:Middle	Middle: Inside Track	Middle:Middle Track	Middle:Outside Track
Track Zone Ratio	1.72	1	1	1	1	2.16

